

W. S. B.

AGENDA COVER MEMO

AGENDA DATE: January 16, 2008
TO: Board of County Commissioners
DEPARTMENT: Health & Human Services
PRESENTED BY: Rob Rockstroh



AGENDA TITLE: ORDER _____ / IN THE MATTER OF ADDING ONE FULL TIME (1.0 FTE) PSYCHIATRIC NURSE PRACTITIONER; ONE FULL TIME (1.0 FTE) MENTAL HEALTH SPECIALIST; ONE FULL TIME (1.0 FTE) MENTAL HEALTH ASSOCIATE; ONE PART TIME TEMPORARY (.50 FTE) MENTAL HEALTH ASSOCIATE EFFECTIVE FEBRUARY 1, 2008 AND APPROPRIATING AN ADDITIONAL \$107,735 IN REVENUES AND EXPENDITURES FOR 2007-2008 IN FUND 286 DEPARTMENT OF HEALTH & HUMAN SERVICES

I. MOTION

Motion to Approve Adding One Full Time (1.0 FTE) Psychiatric Nurse Practitioner; One Full Time (1.0 FTE) Mental Health Specialist; One Full Time (1.0 FTE) Mental Health Associate; One Part Time Temporary (.50 FTE) Mental Health Associate Effective February 1, 2008 and Appropriating an Additional \$107,735 in Revenues and Expenses in Fund 286 Department of Health & Human Services.

II. AGENDA ITEM SUMMARY

The Board is being asked to approve the addition of 3 permanent positions and one temporary position at Lane County Mental Health, Department of Health & Human Services

III. BACKGROUND/IMPLICATIONS OF ACTION

A. Board Action and Other History

Board Order 06-2-22-15 approved the 2007-2009 Lane County Implementation Plan for prevention, mental health and addiction services. The 2007-2009 Legislatively Adopted Budget authorized additional funding for Community Mental Health Programs to provide mental health services. In August, 2007, the Office of Addiction and Mental Health Services requested a Plan Amendment to the 2007-2009 Implementation Plan for these additional funds. Board Order 07-9-26-2 approved the Plan Amendment which was then submitted and approved by the Office of Addiction and Mental Health Services.

The approved Plan Amendment addressed additional funding for five separate service areas.

1. Jail Diversion Services – Adult Mental Health
2. Acute Care Services - Adult
3. Case Management non-Medicaid adult at risk
4. Children's Mental Health Non-Medicaid Intensive Community Services
5. Community Crisis

The Plan Amendment for Community Crisis did not include the addition of any new positions.

B. Policy Issues
No policy issues

C. Board Goals
Strategic Plan – (B) Resource Planning and Allocation. (B1): Develop plans for chief resources applied to deliver County services – human resources, information technology and land and facilities.

D. Financial and/or Resource Consideration

This is new state funding which was authorized by the 2007-2009 Legislatively Adopted Budget. The 2007-2009 County Financial Assistance Agreement will be amended to include the addition of these funds. Total amount of additional funds awarded for these five service areas is \$2,052,142 for the period July 1, 2007 through June 30, 2009. It is anticipated that these funds will carry forward to the 2009-2011 biennium.

E. Analysis

The Office of Addictions and Mental Health Services approved Lane County's submission of the plan amendment for five different service areas. Four service areas included adding positions. Those positions and the service areas that will be impacted by the new funds are as follows:

1. Jail Diversion - Mental Health Associate (1.0 FTE). This position will provide outreach case management services for parole and probation clients and those clients that are unfit to proceed. In addition, the funds will pay for Psychiatric Nurse Practitioner (0.35 FTE) to provide medication management services. Funds for medication, housing access, supported employment training and transports are also included. The focus for this service is serving people who are arrested, in jail or referred to Oregon State Hospital for aid and assist evaluations under ORS 161.370. The purpose is to reduce the number of people with mental illness serving time in local jails through the development of jail diversion programs. Total amount of additional funding for jail diversion for 2007-2009 is \$428,767.

2. Acute Care - These funds will be utilized to add Psychiatric Nurse Practitioner (0.4 FTE) to provide psychiatric prescribing for those individuals who have been discharged from the Johnson Unit at Sacred Heart unit and

have no access to medications. Also included will be additional funds for indigent beds at the Johnson Unit. Total amount of additional funding for acute care for 2007-2009 is \$837,674.

3. Case Management for non-Medicaid clients at risk – Mental Health Specialist (1.0 FTE). This position will provide intensive community based services and supports to non-Medicaid eligible adults who are at risk for impacting the State Hospital census. In addition, a Psychiatric Nurse Practitioner (0.25 FTE) will be hired for medication management services. Total amount of additional funding for case management for non-Medicaid clients for 2007-2009 is \$219,880.

4. Children's Mental Health – non-Medicaid Intensive Community Based Services - Mental Health Associate (.50 FTE temporary). This position will be a skills trainer working individually with children who are non-Medicaid eligible. In addition funds will pay for parenting classes and community wrap around services on a child by child basis. Total amount of additional funding for Children's Mental Health – non-Medicaid Intensive Community Based Services for 2007-2009 is \$260,396.

F. Alternatives/Options

The four new positions requested are to provide new mental health services. Currently, Lane County Mental Health is at capacity in terms of case management services and prescribing services. The jail diversion position will allow for intensive assertive case management; assist clients in accessing supported employment and reduce the occurrence of incarceration of the mentally ill. The Psychiatric Nurse Practitioner position will be shared among three service areas and increase Lane County Mental Health's capacity to prescribe psychiatric medications. The position for non-Medicaid adults is to reduce readmissions of indigent into the hospitals. The position for non-Medicaid children is to provide skill building for children who would not have access to these services.

The Board Order 07-9-26-2 approved the plan amendment which included the new positions. If the new positions are not approved, funds for these positions will need to be returned to the Office of Addictions and Mental Health Services.

IV. TIMING/IMPLEMENTATION

The effective date of the new positions is February 1, 2008. Upon Board approval, revenues and expenditures will be increased in Health & Human Services and Lane County Human Resources will post for these positions.

V. RECOMMENDATION

The recommendation is that the Board approve the addition of one Psychiatric Nurse Practitioner (1.0 FTE); one Mental Health Associate (1.0 FTE), one Mental Health Specialist (1.0 FTE) and one part time temporary Mental Health Associate (.50 FTE).

VI. ATTACHMENTS

Board Order
Organizational Chart
Job Code and Costs for four positions

Admin \ Marcia \ MH Board Orders – Four FTE positions

THE BOARD OF COUNTY COMMISSIONERS, LANE COUNTY, OREGON

RESOLUTION AND ORDER:) IN THE MATTER OF ADDING ONE FULL TIME (1.0 FTE)
) PSYCHIATRIC NURSE PRACTITIONER; ONE FULL TIME (1.0
) FTE) MENTAL HEALTH SPECIALIST; ONE FULL TIME (1.0
) FTE) MENTAL HEALTH ASSOCIATE; ONE PART TIME
) TEMPORARY (.50 FTE) MENTAL HEALTH ASSOCIATE
) EFFECTIVE FEBRUARY 1, 2008 AND APPROPRIATING AN
) ADDITIONAL \$107,735 IN REVENUES AND EXPENDITURES
) FOR 2007-2008 IN FUND 286 DEPARTMENT OF HEALTH &
) HUMAN SERVICES

WHEREAS, the 2007-2009 Legislatively Adopted Budget authorized additional funding for Community Mental Health Programs to provide mental health services; and

WHEREAS, the Office of Addiction and Mental Health Services requested a Plan Amendment to the 2007-2009 Implementation Plan for this additional funding; and

WHEREAS, Board Order 07-9-26-2 approved submission of the Plan Amendment and the Office of Addiction and Mental Health Services approved the Plan Amendment; and

WHEREAS, four new positions in service areas Jail Diversion, Acute Care, Case Management non-Medicaid adults and Children's Mental Health non-Medicaid Intensive Community-Based Services were incorporated into the approved Plan Amendment; and

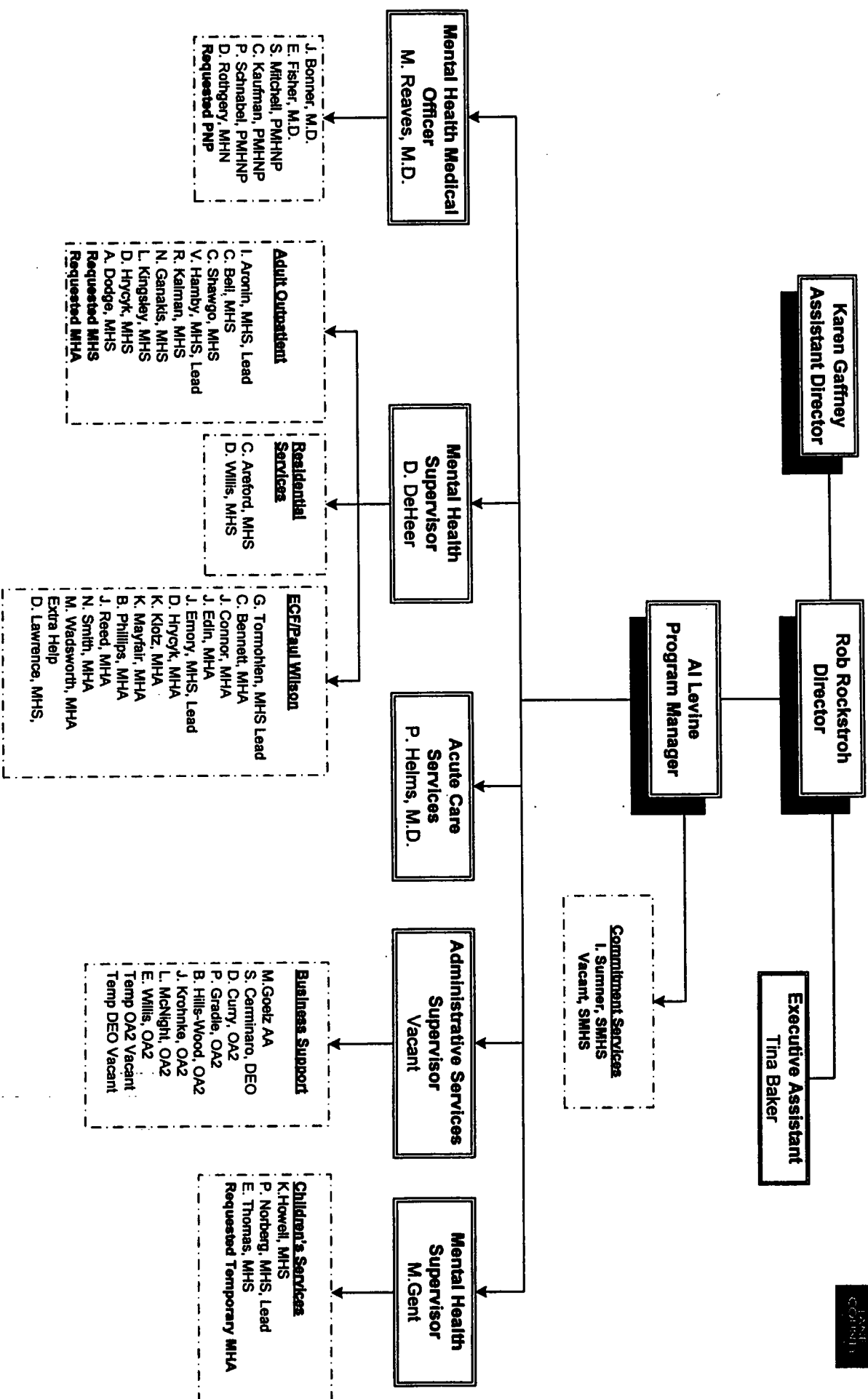
WHEREAS, these four positions will provide new mental health services currently not offered with the new funding awarded through the Plan Amendment.

NOW THEREFORE, IT IS HEREBY RESOLVED AND ORDERED that the Board of County Commissioners add one full time (1.0 FTE) Psychiatric Nurse Practitioner; one full time (1.0 FTE) Mental Health Specialist; one full time (1.0 FTE) Mental Health Associate and one part time temporary (.50 FTE) Mental Health Associate effective February 1, 2008 and appropriate an additional \$107,735 in Revenues and Expenditures for 2007-2008 in fund 286 Department of Health & Human Services.

DATED this _____ day of January, 2008

Chair
Lane County Board of Commissioners

Health & Human Services Mental Health



Account Code	Description	FTE	Job Code	Effective Date	Cost
286-3427412	MHA (Temp)	.50	B011	February 1, 2008	\$8,965
286-3427412	MHS	1.0	B068	February 1, 2008	\$26,292
286-3427412	MHA	1.0	B011	February 1, 2008	\$25,294
286-3427412	PNP	1.0	B023	February 1, 2008	\$47,184
					\$107,735